



RiverLight Quay, Battersea

£3,950 Per month



2 Balconies | Fully Furnished | Concierge | Gym | Swimming Pool | Near Battersea Power Station | Great Transport Links | Cinema | Clubhouse | Communal Gardens



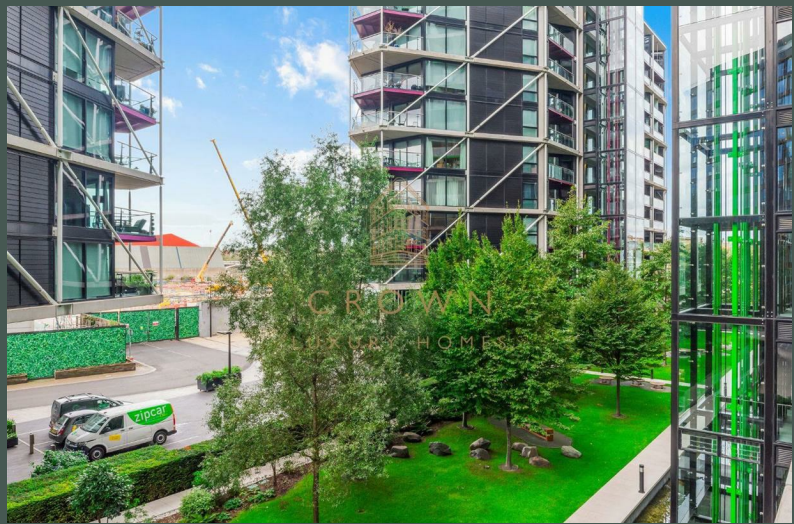
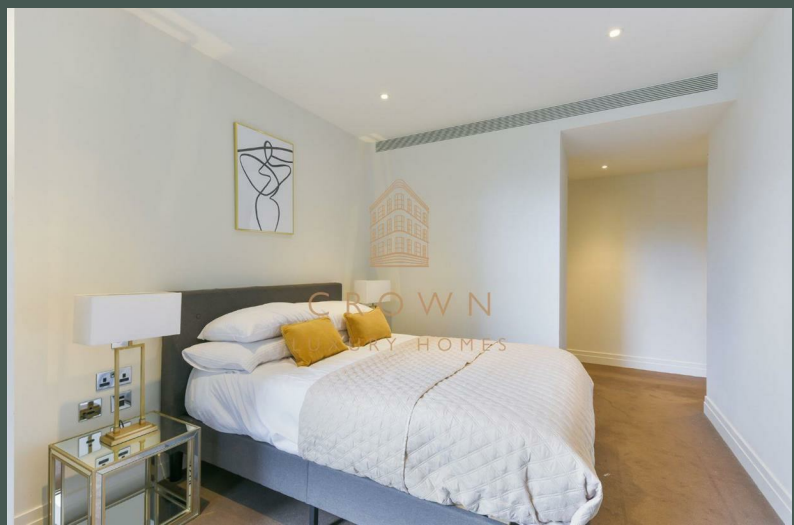
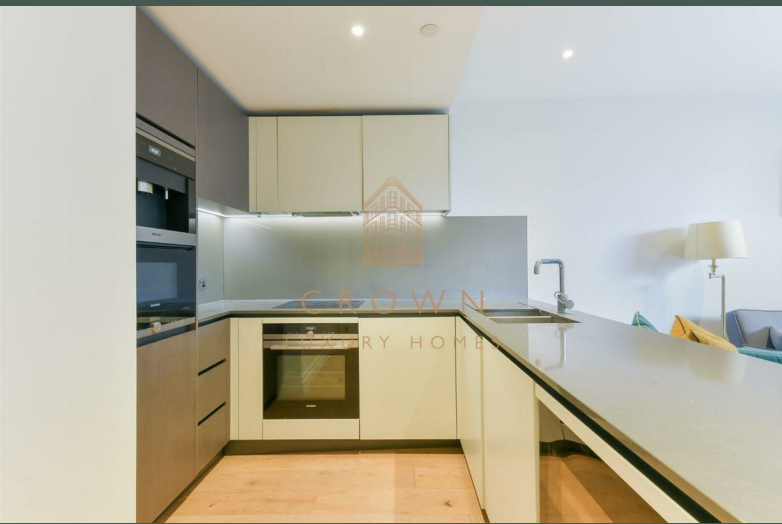
CROWN
LUXURY HOMES

lettings@crownluxuryhomes.com
+44 2035 143482



- Near Battersea Tube Station
 - Two balconies
- Residents' clubhouse
- Residents' cinema
- Communal gardens

- Next to Battersea Power station
 - 24hr Concierge
- Residents' swimming pool
- Residents' spa and gym
- Waitrose nearby



The Property
Ref No: 17861055

A stunningly rendered two-bedroom apartment in Riverlight Quay, extremely well situated in South Bank, SW11.

This well designed property is bright, stylish and finished to the highest specifications. The living and dining area benefits from expansive windows that mean plenty of natural light, all year round.

Leading to an amazing balcony overlooking quiet communal gardens, it's the perfect place to relax and unwind at any time of the day or night.

The fully-fitted, open-plan kitchen has modern appliances, large work-tops and plenty of storage, making it highly-functional and a pleasure to use. Each bedroom is warm and expertly crafted, with excellent fixtures and integrated wardrobes, plus direct access to the outside balcony space. Restful and energising, this is a truly exceptional way to greet each morning.

Both bedrooms enjoy access to a perfectly realised bathroom, one with a large walk-in shower, the other with a great sized tub. Both feature a well lit vanity-unit and classic tiled finish. What's most impressive about this property, though, is the way the overall design functions as a cohesive whole, creating an atmosphere that's warm, sophisticated and effortlessly modern. A genuine example of gold-standard, 21st century living.

Riverlight Quay Development

South Bank remains, as ever, one of London's most beloved districts, home to an array of world-famous landmarks, incredible cultural venues and some of the best shops, cafes and restaurants you'll find anywhere. It's a vibrant, thriving community that only gets better with each passing year.

With all this on its doorstep, Riverlight Quay provides a quiet, restful living environment, perfect to come home to at the end of a busy day. Residents have access to a range of exclusive facilities, designed to ensure an excellent level of personal care, seven days a week.

Featuring a spa, gym and swimming pool, plus a private garden and 24hr concierge service, this easy-going, cosmopolitan environment is truly in a class of its own.

Transport links are plentiful and efficient, meaning travel into the city and beyond is quick and easy. Overall, an exceptional development in one of the capital's premier locations.

Additional Information

Heating/Hot Water Provider: SSE (Fees and Charges May Apply)

Council: Wandsworth, Band F

Holding Deposit: Equivalent to 1 Weeks' Rent

Security Deposit: Equivalent to 5 Weeks' Rent

Local Council: Wandsworth
 Council Tax Band: F

Energy Efficiency Rating		Environmental Impact (CO ₂) Rating	
	Current	Potential	
Very energy efficient - lower running costs			
(92 plus) A			
(81-91) B			
(69-80) C			
(55-68) D			
(39-54) E			
(21-38) F			
(1-20) G			
Not energy efficient - higher running costs			
England & Wales	EU Directive 2002/91/EC		

Energy Efficiency Rating		Environmental Impact (CO ₂) Rating	
	Current	Potential	
Very environmentally friendly - lower CO ₂ emissions			
(92 plus) A			
(81-91) B			
(69-80) C			
(55-68) D			
(39-54) E			
(21-38) F			
(1-20) G			
Not environmentally friendly - higher CO ₂ emissions			
England & Wales	EU Directive 2002/91/EC		

